

Aetria®

Control rooms made simple



DESIGN, MANAGE, CONTROL

Aetria is Datapath's solution for the complete design, management, operation and monitoring of control rooms.

By connecting workstations, video walls and content, Aetria gives system integrators the freedom to design and deploy the right solution, while enabling operators to focus solely on their core objectives.

CONTENTS

Component Overview	Page 2
Aetria Command Center	Page 3
Aetria Workstation	Page 6
Aetria WallControl	Page 8
License Options	Page 9
Order Codes	Page 10

Component Overview

AETRIA COMMAND CENTER

A unified interface for system integrators to design, manage and deploy control rooms solutions. Once deployed, control room operators can quickly and easily view the sources they need in real-time on any connected display surface.

AETRIA WORKSTATION

Aetria Workstation gives control room operators the flexibility to view multiple sources on their local workstation screens.

Using single or multiple monitors, operators can segment their desktop into dedicated zones to display any combination of sources available in Aetria alongside their main desktop and local applications.

AETRIA WALLCONTROL

Aetria WallControl runs on a Datapath VSN controller to connect Aetria to a video wall, enabling seamless integration of video walls into the Aetria system.

AETRIA TOUCH

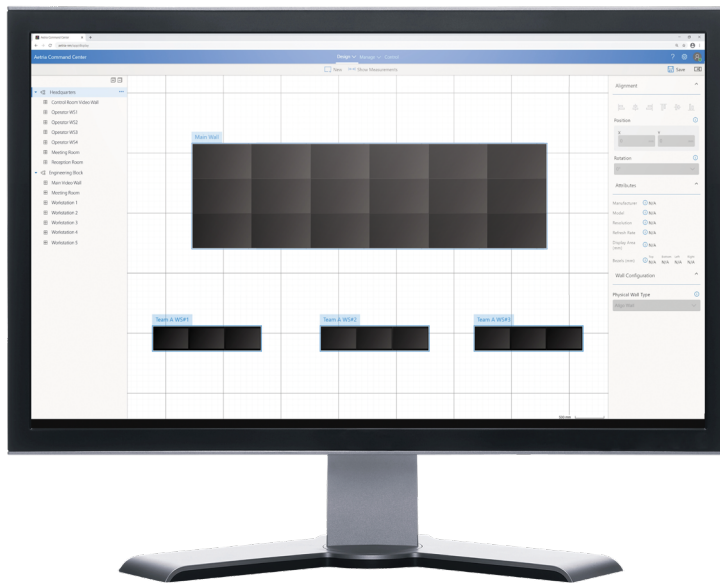
The Aetria Touch panel allows quick, easy management of content displayed on any video wall within the Aetria environment. The sleek 10.1" touch panel is designed to sit on an operator's desk or be affixed to a wall, and connects directly to the Aetria control network via an ethernet connection with optional POE.

Aetria® Command Center

COMPREHENSIVE AND UNIFIED INTERFACE

Sitting at the heart of the Aetria solution, Aetria Command Center is a comprehensive and unified interface for systems integrators to design, manage and operate control rooms solutions.

Once configured, control room operators use Aetria Command Center to quickly and easily view the sources they need in real-time on any connected display surface. With built-in monitoring and diagnostics, Aetria Command Center ensures that all components of the Aetria system are functioning as required and provides real-time alerts to enable swift resolution if any issues occur.



SINGLE, ALL-IN-ONE APPLICATION

Aetria Command Center provides a single, centralized application for the complete end-to-end design, management and control of control room connectivity solutions.

ANY SOURCE, ANY SCREEN, ANY TIME

With Aetria, every online source is multicast, giving users the flexibility to send multiple copies of each source to any connected workstation or video wall as and when needed.

PROJECT IMPORT

Projects created in Aetria Designer can be imported directly into Aetria Command Center, allowing the set up of purchased equipment to be streamlined.

WEB-BASED MANAGEMENT INTERFACE

The intuitive web-based interface allows users to quickly and easily set up all required rooms and locations, video walls and displays, operator workstations and available sources and content.

TEMPLATES AND LAYOUTS

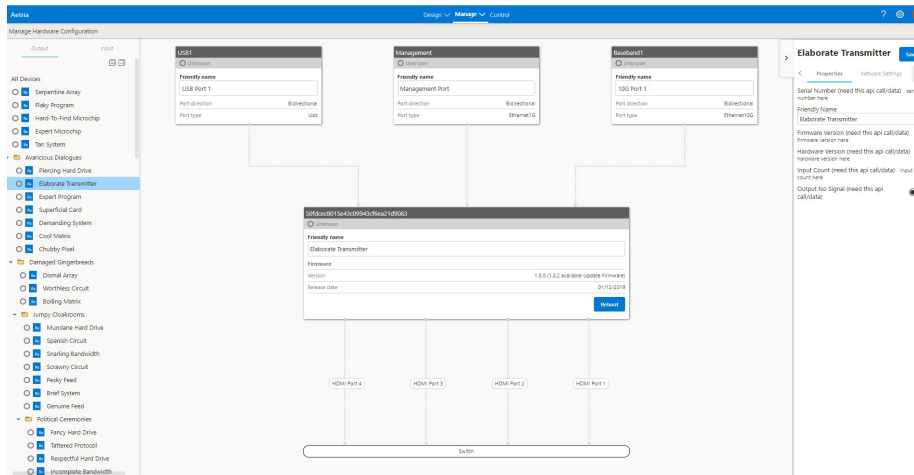
Using the built-in template and layout functionality, users can populate connected video walls or workstations with multiple sources with a single click.

Layouts are easy to design using the drag and drop interface, and saved layouts can be shared with other users. Any layout can be shown on any connected display surface of any size, from a large video wall to a single operator screen.

SOURCE MANAGEMENT MADE EASY

With unique features for source management and identification, Aetria Command Center makes managing hundreds of sources easy. For each source, users can assign friendly names and add text labels (on-screen-display) to enable quick identification.

Cropping is available to allow selecting areas of interest within a source. Users can also create banners to add supplementary information to video walls or displays, and borders and frames can be added to sources to quickly highlight, group or identify them.



Aetria Command Center ensures easy management of sources.

ENHANCED GRAPHICS FEATURES

Enhanced features allowing window capabilities to any content, on any end point. Operators will be able to categorize and identify sources, add supplementary information in overlays, and create custom banners for information displays on video walls and workstations.

- On-screen Displays
- Borders and Frames
- Banners

SECURITY FIRST

User accounts and permissions are configured in Aetria Command Center by the allocated system administrator(s). Each configured user can be granted access to individual sources and screens to give full access control of all assets across the entire Aetria ecosystem.

MONITORING AND DIAGNOSTICS

With built-in monitoring and diagnostics, Aetria provides real-time monitoring of all connected devices, ensuring smooth operation and swift response if issues occur.

AVAILABLE LANGUAGES

English, Chinese (Simplified and Traditional), French, German, Italian, Japanese, Korean, Polish, Portuguese, Russian, Spanish, Turkish.

EASY INSTALLATION

Aetria Command Center is delivered on 'Aetria Network Manager', a pre-installed 1U rack mount appliance for quick and easy installation.

SPECIFICATIONS

For more information on the Aetria Network Manager appliance, please visit

www.datapath.co.uk/datapath-products/aetria-control-room-solutions/aetria-network-manager/



AETRIA COMMAND CENTER FEATURE LIST

Feature	Description
DESIGN	
Project Setup	Import project design into Aetria Confirm number of walls and workstations
MANAGE	
Hardware configuration:	Device discovery and provisioning Hardware source management and naming Manage hardware settings and updates Configure redundancy Source preview Aetria WallControl and Aetria Workstation endpoint management
Display Surfaces:	Assign hardware devices to walls and monitors Determine video wall presets
Templates:	Create and edit centralized library of templates for use on workstations and walls
Sources	Manage all sources within the environment Create new sources Remote Connections (VNC / RDP) Web pages Network video streams Composite windows Carousels Define local VSN applications Bulk Upload of IP streams Cropping
Asset Management	Create banners, OSDs, borders for instant deployment onto sources
Layouts	Create and edit centralized library of layouts for use on workstations and walls
User Rights Management	Fully secure user rights management with optional Active Directory integration Create users and define roles to allow access to different sources and menu options
CONTROL	
Walls	View all networked walls, add and clear wall content
Sources	Add sources to the wall via drag and drop
Templates and Layouts	Add and clear templates and layouts from the wall
Wall Properties	View and edit properties including frame size/color, on/off
Content	Search and filter content by name/tag
Touch Interface	The Aetria solution includes a responsive, web-based interface to allow basic touch control from a mobile or tablet device. The interface provides a simple tool to apply pre-set layouts to any video wall, or clear content from the wall.

Aetria® Workstation

EMPOWERING THE CONTROL ROOM OPERATOR

Aetria Workstation gives control room operators the flexibility to view multiple sources on their local workstation screens.

Using single or multiple monitors, operators can segment their desktop into dedicated zones to display any combination of sources available in Aetria alongside their main desktop and local applications.

Using Aetria Workstation, sources can be easily viewed, controlled or shared to other operator workstations or any connected video wall for wider viewing.



Aetria Workstation gives operators the flexibility to segment their desktop into dedicated zones and create a 'personal video wall' to display.



Control any combination of sources available in Aetria alongside local applications.

USER-DEFINED ZONES

Using Aetria Workstation, users can segment their desktop surface into multiple areas or zones for viewing available content alongside local applications.

SOURCE PREVIEW

Users can preview any configured source in the Aetria network on their local workstation.

COLLABORATION IS MADE EASY

Aetria supports multicast for each source, allowing users to share multiple copies of sources to any connected screen(s) or video wall.

TEMPLATES AND LAYOUTS

Using the built-in template and layout functionality, Aetria Workstation allows users to save their current view for quick recall when needed.

With layout 'auto-fit', users can show layouts saved on their local workstation on any connected display surface of any size, from a large video wall to a single operator screen.

ENHANCED GRAPHICS FEATURES

Enhanced features allowing window capabilities to any content, on any end point. Operators will be able categorize and identify sources, add supplementary information in overlays, and create custom banners for information displays on video walls and workstations.

- On-screen Displays
- Borders and Frames
- Banners

WORKSTATION HARDWARE SUPPORT

Aetria Workstation is an operator PC that runs a Windows 10 environment. As part of Datapath's Aetria environment it allows users to utilize their own PC desktop and when combined with Datapath capture cards and approved graphics cards, content from the Aetria network can be delivered directly to the desktop. Third party devices that have been tested and qualified for use as an Aetria Workstation include Dell workstations, NVIDIA graphics cards and Intel graphics solutions. Contact a Datapath representative for more information on compatible products.

MODELS AVAILABLE

Aetria Workstation Standard:

- Support for up to 4 screens (either HD or 4K)
- Workspace templating
- Full KVM support with Aligo / Arqa Devices

Aetria Workstation Professional:

- All Aetria Workstation Standard features
- Support for mixing HD and 4K monitors
- Greater than 4 screens (subject to workstation & processor capabilities)

AVAILABLE LANGUAGES

English, Chinese (Simplified and Traditional), French, German, Italian, Japanese, Korean, Polish, Portuguese, Russian, Spanish, Turkish.

COMPATIBILITY

Windows 10.

MINIMUM REQUIREMENTS

Contact your Datapath Representative for more information on your Aetria Workstation options.

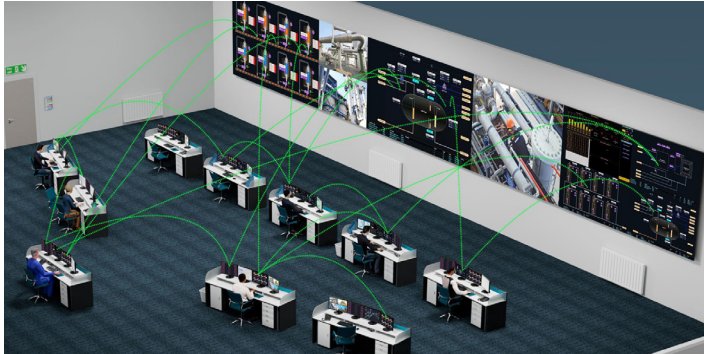
Aetria® WallControl

VIDEO WALLS, CONNECTED

Powered by Datapath's proven video wall technology, Aetria WallControl enables seamless integration of video walls into the Aetria system.

The hardware behind Aetria WallControl is Datapath's range of VSN systems. Video wall controllers that have been powering video walls in critical control rooms for over a decade. The Aetria WallControl software connects VSN powered video walls to the Aetria system and enables complete, seamless control through the Aetria Command Center.

Placement and organization of content on connected video walls is easy with support for layouts, templates, on screen display (OSD) and carousels.



MULTI-WALL

Aetria allows multiple walls to be delivered by a single VSN system. Walls in separate areas of a building can be independently driven from a single location.

Multiple walls can be easily set-up and if required each wall can be assigned a unique set of sources or video resources.

VISION ENCODE

Vision Encode allows sources such as HDMI feeds to be captured within the VSN video wall controller. The sources can be displayed on a video wall, or encoded into H.264 and streamed out so that the content can be displayed in other locations.

SPECIFICATIONS

For the specifications on Datapath's VSN range of video wall controllers, please refer to the Datapath website at: www.datapath.co.uk/datapath-products/vsn-controllers.



Aetria® License Options

YOUR REQUIREMENTS

Before choosing your license options, please discuss your requirements with a Datapath Representative.

AETRIA NETWORK MANAGER

License Type	Description
Aetria Unlimited	For installations that require VSN video walls, unlimited Aligo/Arqa endpoints and all types of workstations.
Aetria VSN Video Walls	For environments that exclusively utilize VSN video walls without Arqa/Aligo endpoints.

AETRIA WALLCONTROL TIERS

Feature	Standard	Professional
Number of Connected Displays	Unlimited	Unlimited
Standard Sources (Vision, Web, Local Apps, Videos / images)*	Yes	Yes
SQX / IP Decodes	8	Limited by Hardware
Aligo/Arqa RX to capture card	Yes	Yes
Multi-Wall	No	Yes
Display Control	Yes	Yes
User Rights Management (URM)	Yes	Yes
VSN Redundancy (requires identical hardware to the VSN it is paired with including license)	Yes	Yes
Network Manager Redundancy (requires additional complete hardware including license)	Yes	Yes
Tablet Interface	Yes	Yes
Vision Encoding	No	Yes

AETRIA WORKSTATION TIERS

Feature	Standard	Professional
Number of Workstation Monitors	Up to 4	Unlimited
HD Monitor Support	Yes	Yes
4K Monitor Support	Yes	Yes
Mixed HD and 4K Monitor Support	No	Yes
Create Desktop Templates	Yes	Yes
Access Aetria Network Sources (via User Rights Management)	Yes	Yes
ActiveSQX and/or Video Capture Support	No	Yes
Access to Aetria Network Manager and Command Center Components	Yes	Yes

Order Codes

AETRIA NETWORK MANAGER

PRODUCT	CODE
Aetria Unlimited License and Server	AETRIA-LIC-UNL / AETRIA-SRV1
Aetria VSN Video Walls License and Server	AETRIA-LIC-VSN / AETRIA-SRV2

AETRIA WORKSTATION

PRODUCT	CODE
Aetria Workstation Standard License	AETRIA-WS-STD
Aetria Workstation Professional License	AETRIA-WS-PRO

AETRIA WALLCONTROL

PRODUCT	CODE
Aetria WallControl Standard License	AETRIA-WC-STD
Aetria WallControl Professional License	AETRIA-WC-PRO

**Datapath UK and
Corporate Headquarters**
Bemrose House, Bemrose Park,
Wayzgoose Drive, Derby,
DE21 6XQ, United Kingdom
☎ +44 (0) 1332 294 441
✉ sales-uk@datapath.co.uk

Datapath North America
2490 General Armistead Avenue,
Suite 102, Norristown,
PA 19403,
USA
☎ +1 484 679 1553
✉ sales-us@datapath.co.uk

Datapath Japan
Axon Hamamatsucho,
1-1-23 Shibadaimon,
Minato-ku,
Tokyo-to,
105-0012, Japan
✉ sales-jp@datapath.co.uk

www.datapath.co.uk

